

## WE NEED YOU !

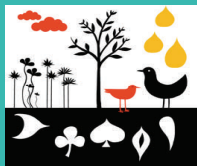
CHEC exists:

to help individuals & communities identify the most important environmental problems facing them; empowering & energizing them with tools to prioritize & develop their own action plans towards more sustainable solutions to a healthy environment.

Please consider volunteering for CHEC. This is a community based center & your stories, help, & participation are what makes this Center work!

CHEC research projects come from the needs of the communities around us. This Center offers the technical assistance that many individuals & community groups, organizations & agencies may need to advocate or initiate solutions to environmental

CHEC gathers data & knowledge regarding these environmental issues as well as national issues from many different sources. CHEC also collaborates & networks with a diverse group of partners. We can be a first step for you to acquire the data & knowledge which can assist you in school & community education, policy advocacy as well as networking.



## STAFF

Conrad Daniel Volz, DrPH, MPH

Center Director  
cdv5@pitt.edu  
412-648-8541

Charles Christen, MEd, LPC

Director of Operations  
clc142@pitt.edu  
412-965-7679

Ravi Sharma, PhD

Geographic Information System Coordinator

Andrew Michanowicz, MPH

Research Assistant

Samantha Malone, MPH

Communications Specialist

Sara Gillooly

Administrative Assistant

Graduate Student Assistants

Ryan Buttons

Kyle Ferrar

Laura Hyler

Shannon Kearney

Jason Mayfield



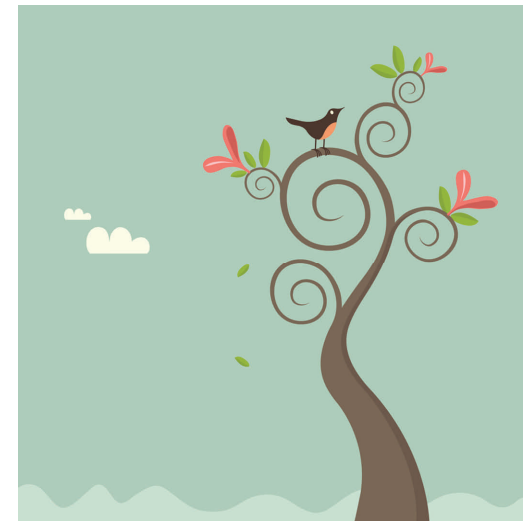
[www.chec.pitt.edu](http://www.chec.pitt.edu)

Center for Healthy Environments & Communities  
Univ. of Pittsburgh Graduate School of Public Health  
Environmental & Occupational Health Dept.

Bridgeside Point Building  
100 Technology Drive, Suite 553  
Pittsburgh, PA 15219  
412-624-9379  
E-mail: [chec@pitt.edu](mailto:chec@pitt.edu)



**Center for Healthy  
Environments and  
Communities**



**Merging Community Concerns  
with  
Environmental Health Research**



UNIVERSITY OF PITTSBURGH • GRADUATE SCHOOL OF  
**PUBLIC HEALTH**

# MISSION

Our mission is to improve environmental health in Western Pennsylvania through the merging of community concerns with ecological research targeting assessment for exposure to environmental toxins, assessment of health risks to these exposures, environmental monitoring & the modeling of contaminant exposures in order to visually describe & connect their movement in the environment to the web of life.

This community-based approach is aimed toward analyzing the social, economic, policy making, behavioral & geographical variables associated with environmental health issues.



# KEY OBJECTIVES

- ◆ Explore the Relationship Between Ecosystem & Human Health
- ◆ Build Alliances
- ◆ Serve as a Community Resource
- ◆ Evaluate & Prioritize Environmental Programs

# SERVICES

- ◆ Environmental Exposure Assessment & Evaluation
- ◆ Community-Based Participatory Research (CBPR)
- ◆ Interventions Design
- ◆ Program Evaluation
- ◆ Translational Research
- ◆ Community Outreach
- ◆ Formulation & Analysis of Environmental Health Policy



# PROJECTS

- ◆ Allegheny River Stewardship Project  
A study of bio-accumulation of toxic metals & metalloids, as well as endocrine disrupting compounds.
- ◆ Environmental Exposure & Autism Study
- ◆ A study of Coal Fired Energy Production Waste & its Relation to Ground water
- ◆ Healthy Homes Resources AT HOME Environmental Asthma Intervention Evaluation project.
- ◆ Environmental Issue Prioritization Project for Southwestern PA
- ◆ GIS modeling & mapping of air particulate matter & cancer rates in Allegheny & surrounding counties.

